

Electrical and optical characteristics and absolute maximum ratings (Thermal pad Temperature=25°C)

Symbol	Parameter	MIN	Typ	MAX	Unit	Test conditions
I _F	DC Forward current			120	mA	
I _{PEAK}	Peak Forward current			300	mA	T _p < 100µsec. ; T=1:10 ; R _{therm} < 100 K/W
V _F	Forward Voltage	3,0	3,4	3,8	V	I _F = 100mA
V _R	Reverse Voltage			5	V	I _{rev} = 10µA
Φ _v	Luminous Flux	30		35	lm	I _F = 120mA
Φ _v	Luminous Flux	25		28	lm	I _F = 100mA
Φ _E	Total Power Output		TBD		mW	I _F = 100mA
I _e	Radiant Flux	10			cd	I _F = 100mA
CCT	Color Temperature	4000		4260	K	
2Φ _{0,5}	Emission Angle		120		deg.	Φ _E = 50%
TK _{VF}	Temp.Coeff. of Forward Voltage		- 2		mV/K	*
TK _F	Temp.Coeff. of Radiant Power		- 0,35		%/K	*
T _{Operating}	Operating Temperature	- 25		85	°C	
T _{Storage}	Storage Temperature	- 25		85	°C	
T _{Soldering}	Soldering Temperature			240	°C	REFLOW SOLDER. 5mm from case @5 sec.
T _{Soldering}	Soldering Temperature			360	°C	IRON SOLDERING (Hand)
Θ _{j-PIN}	Thermal Resistance		40		K/W	
P _{tot}	Total Power Dissipation			480	mW	derate above 45°C 3,5mW/K

* values only for information

** Measurement tolerance of the luminous flux : +/- 10%

*** on request , contact us for further informations

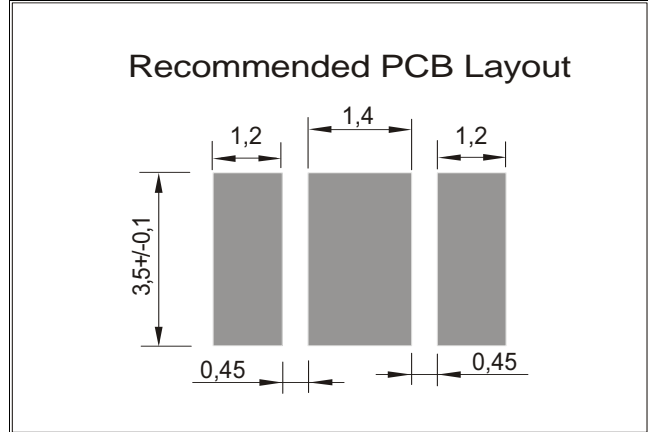
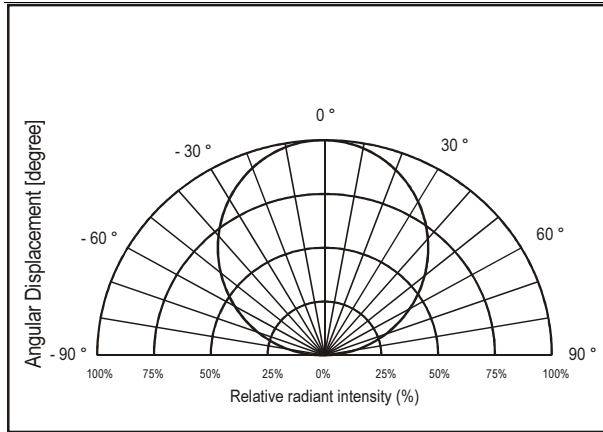
Order Informations :

FQA68359BVM

Bulk

Ceramic SMD LED

FQA68359BVM



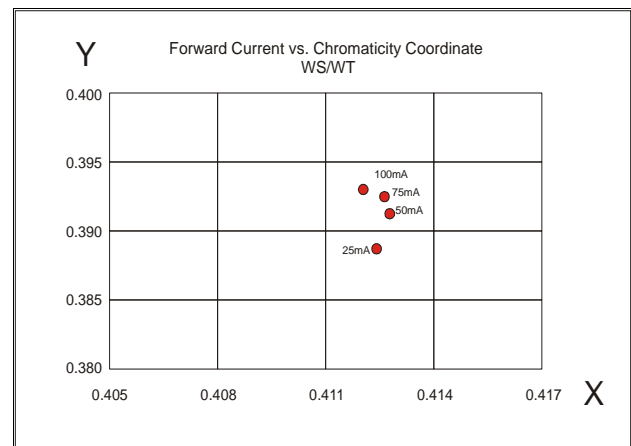
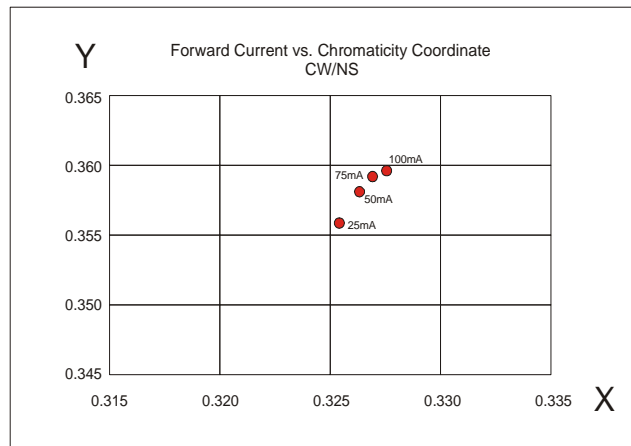
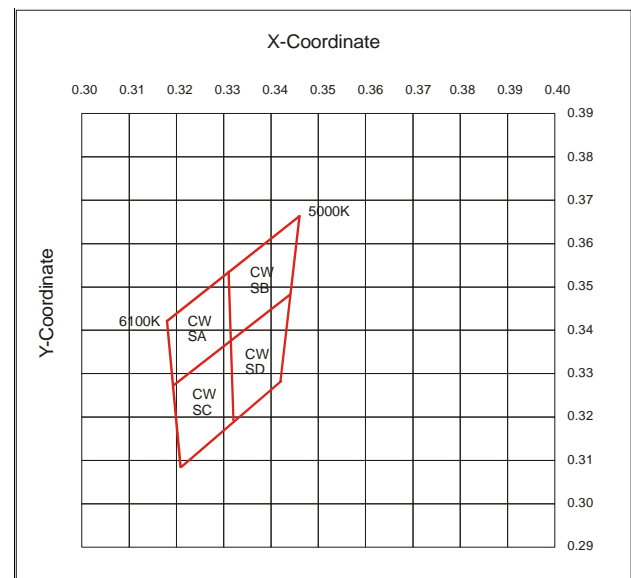
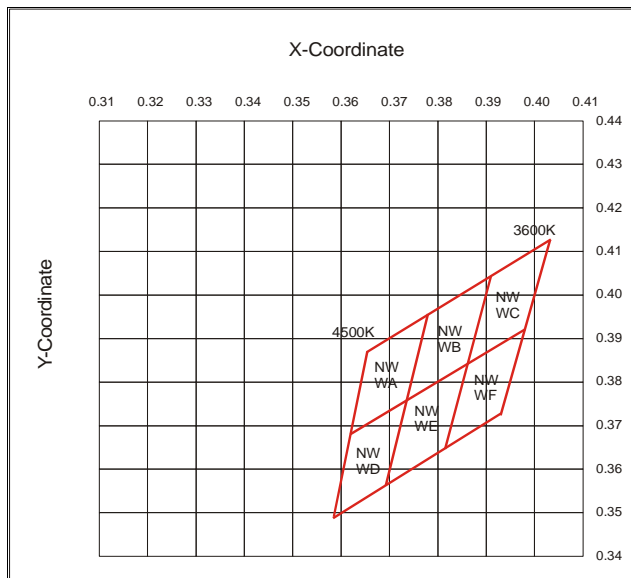
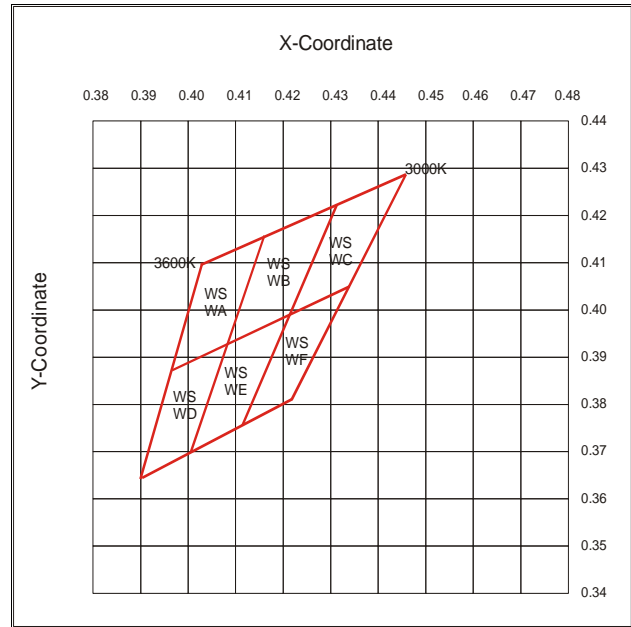
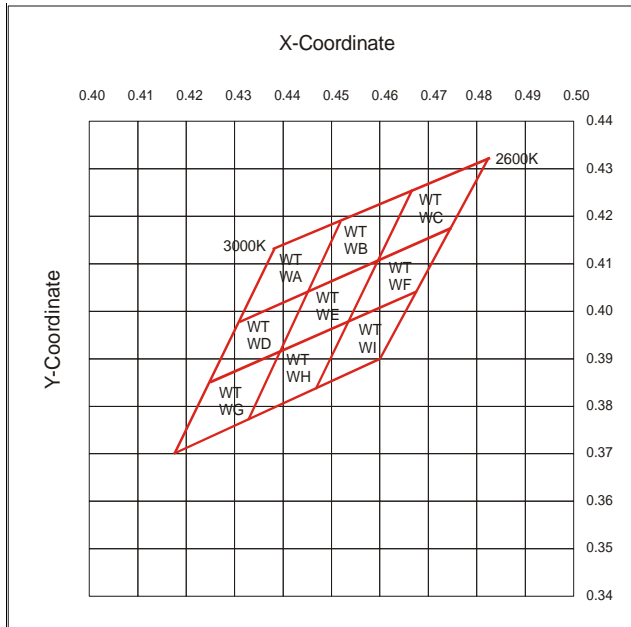
Special Selected :

C.I.E. Color Coordinates :	X1	0.3548	Y1	0.3736
	X2	0.3530	Y2	0.3610
	X3	0.3611	Y3	0.3660
	X4	0.3635	Y4	0.3800

Fietje reserves the right to make changes at any time in order to improve design and to supply the best product possible, contact Fietje for latest device specification sheets before using.

Ceramic SMD LED

FQA68359BVM



Fietje reserves the right to make changes at any time in order to improve design and to supply the best product possible, contact Fietje for latest device specification sheets before using.